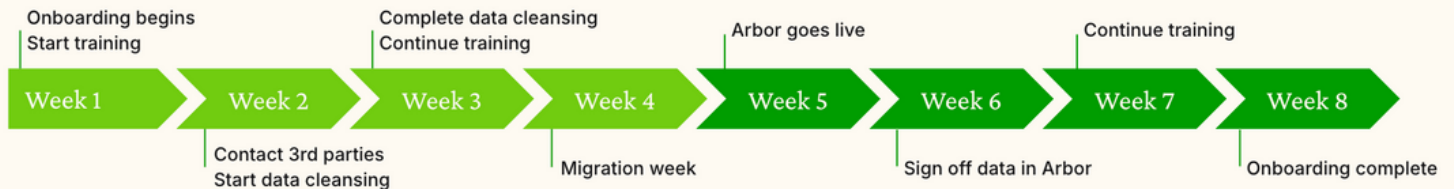


Welcome to Arbor

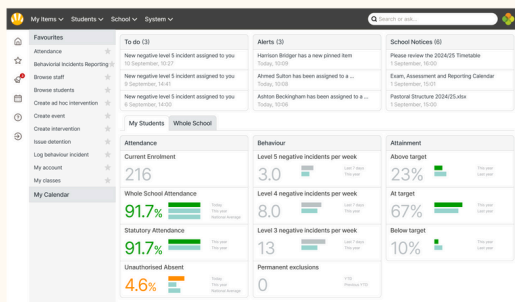
We're excited for you to start your onboarding journey! We'll be in touch 24 days before your migration date, but if you want to get a head start, here are some resources to help.



Your 8 week onboarding journey:

What to expect

You'll receive weekly emails with guidance and resources. See how this is broken down [on our Help Centre](#) and download [your workbook](#) to stay on track.



Data cleansing: The key to quality data

Use our [cleansing guide](#) to make sure your data in ScholarPack is correct and stored in the right place to reduce migration errors. This usually takes five hours, depending on school size.

Third-party systems: Contact and connect

Do you have any third-party applications you'd like to integrate with Arbor? Get in touch with them to let them know you're moving to Arbor. They'll ask when you're moving and let you know any next steps to take. Use our [Help Centre](#) for guidance.

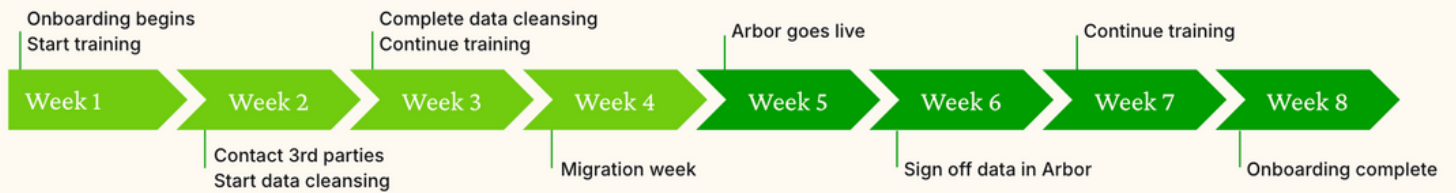


How to get your team excited for the change

While change is exciting, some of your staff might be worried about a new way of working and learning a new system.

Here are some [top tips](#) to support you with the change!

Welcome to Arbor



Get the most out of Arbor: Learning the basics

You'll get access to our Training Hub as part of your onboarding. Pre-migration training will take approximately seven hours, and a further seven can be completed once you're live on Arbor.

Get a head start

Check out our [Help Centre](#) and join [Arbor HQ](#) to get a feel for Arbor and how to use it before your onboarding starts

Stay on-track

- ☐ [Data cleansing](#)
- ☐ [Data counts](#)
- ☐ [Contact third-party apps](#)
- ☐ [Tell your team about Arbor](#)
- ☐ [Watch training videos](#)
- ☐ [Join Arbor HQ](#)



Got a question?

If you have any questions between now and your first week of onboarding, get in touch with your Partnership Manager