

Simplify and connect the whole employee journey

When you join up **SAMpeople Recruit** and **SAMpeople**, you can connect every stage of the employee experience from safer recruitment and onboarding new starters to performance, compliance and case management with education HR best practices built in.

Together, they give you everything you need to:

Attract and recruit the right person

Onboard and support people from day one

Manage HR, payroll, compliance, and development

Employee Portal (MySAM): self-serve tools for staff, oversight for managers



“ The real benefit of having both [SAMpeople and SAMpeople Recruit] systems is that once the recruitment process is complete on SAMpeople Recruit, we can transfer all employee data to SAMpeople at the click of a button. ”

Samantha Andrews,
Head of HR, Dovecote School

No need to duplicate data

Move key vetting checks, contracts, documents and new starter details automatically from SAMpeople Recruit to SAMpeople, reducing errors and saving time.

Fast onboarding without chasing paperwork

Prepare for new starters with ease by quickly transitioning successful candidates to 'hired', and creating and sending offer packs to successful candidates.

Everyone's working from the same page

Create a single, accurate employee profile that follows each new starter throughout their career in your trust.

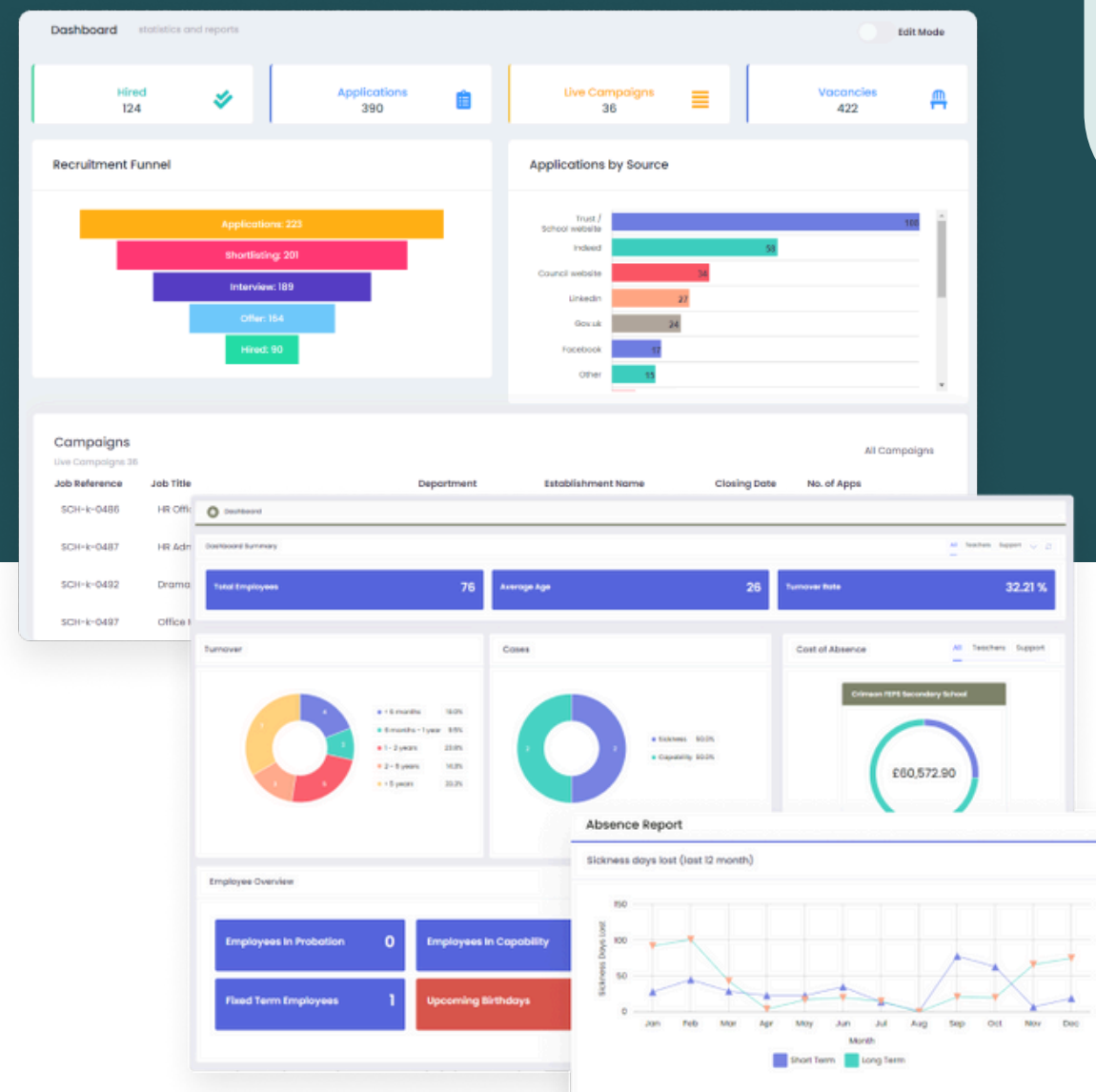
A seamless experience, from application to induction and performance

Then, seamlessly onboard your new starters with SAMpeople

- Push new starter data directly into SAMpeople in one click, so less chance of manual errors
- Automatically populate HR, Payroll, and MIS with accurate information
- Set up onboarding, induction, and probation processes, complete with built-in calculations done for you, including automatically updating your Single Central Record

Manage the whole hiring process with SAMpeople Recruit

- Post jobs, manage approvals, shortlist candidates and run safer recruitment processes — all in line with KCSIE and DfE guidance
- Keep candidates engaged with automated platform messaging and alerts
- Save hours with automatic reference chasing, built-in shortlisting, offer packs and letters, and bulk-messaging



Ready to find out more?

Get in touch with our team to join up SAMpeople and SAMpeople Recruit

→ enquiries@sampeople.co.uk

→ 01924 907319